

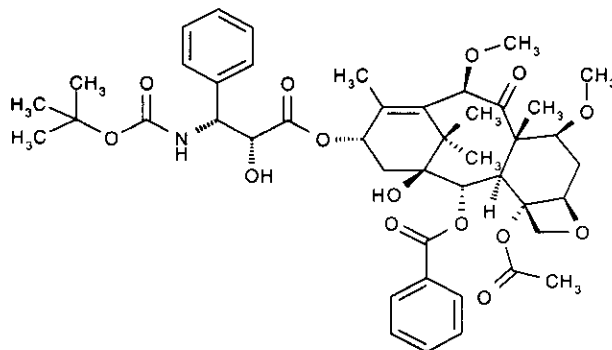
LC Laboratories®

CERTIFICATE OF ANALYSIS

Cabazitaxel, >99%

LC LABS CAT. NO. **C-2581**
FORMULA $C_{45}H_{57}NO_{14}$
M.W. 835.93
CAS NO. [183133-96-2]
STORAGE Store at or below -20 °C

SOLUBILITY Soluble in DMSO at 100 mg/mL; soluble in ethanol at 50 mg/mL; very poorly soluble in water; maximum solubility in plain water is estimated to be about 1-2 μ M; buffers, serum, or other additives may increase or decrease the aqueous solubility.



ANALYTICAL DATA

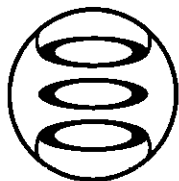
LOT NUMBER **CAB-104**
FORM Crystalline solid; granular or powder
COLOR Off-white
HPLC PURITY >99% (see attached chromatogram)
TLC PURITY >99% (see attached chromatogram)
MELTING POINT 147-154 °C
ELEMENTAL ANALYSIS For: $C_{45}H_{57}NO_{14} \bullet 0.4H_2O$:

	<u>Calculated</u>	<u>Found</u>
C	64.10%	64.11%
H	6.91%	6.81%
N	1.66%	1.73%

EXPIRATION DATE: August 7, 2024 (if stored tightly capped at -20 °C)

August 7, 2014

Tommy.D\COFA-BIZIC\M-COFA\CAB104FL WPD



LC Laboratories®

Cat. No. C-2581

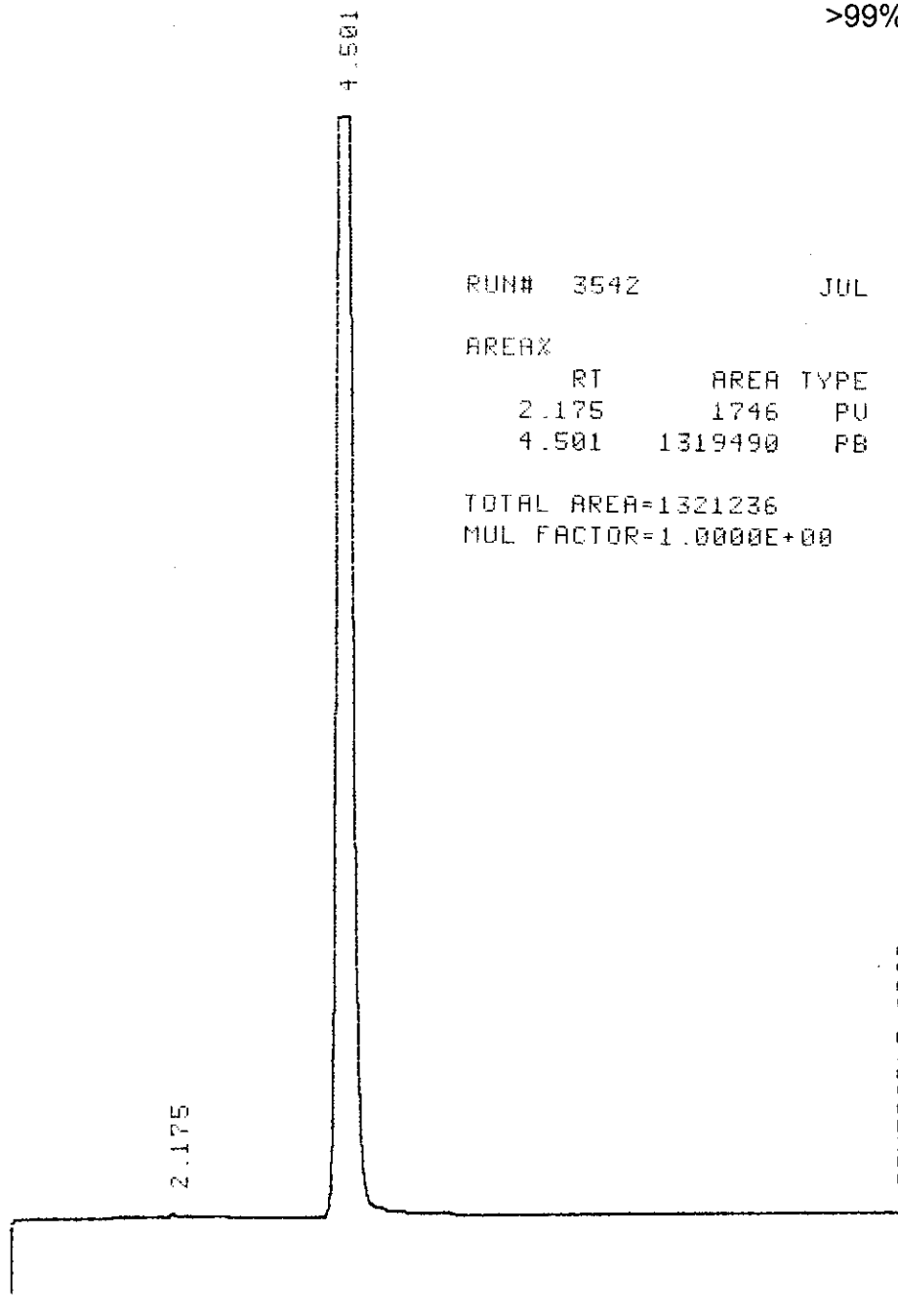
Cabazitaxel

Lot CAB-104

>99%

*CAT. No. C-2581 CABAZITAXEL LOT No. CAB-104 BREAK

* RUN # 3542 JUL 9, 2014 03:05:18
START



RUN# 3542 JUL 9, 2014 03:05:18

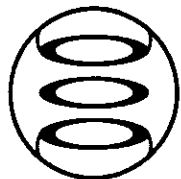
AREAX

RT	AREA	TYPE	WIDTH	AREAX
2.175	1746	PU	.093	.13215
4.501	1319490	PB	.185	99.86787

TOTAL AREA=1321236

MUL FACTOR=1.0000E+00

HPLC: C₁₈ Column, 4.6 mm x 30 cm
 Acetonitrile/Methanol/Water/Acetic acid 38/38/54/0.1
 2 mL/min
 UV₂₅₄ Detection



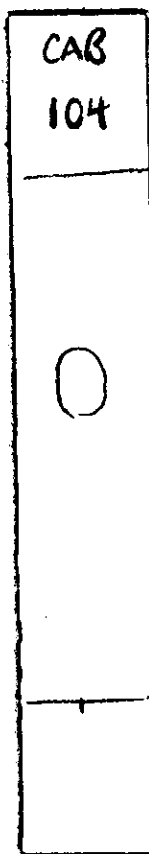
LC Laboratories®

Cat. No. C-2581

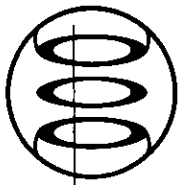
Cabazitaxel

Lot CAB-104

>99%

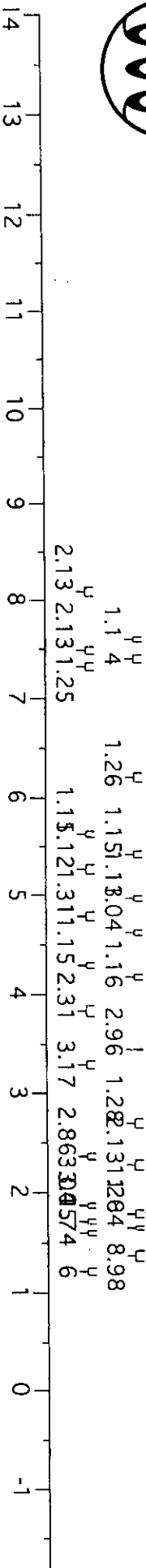
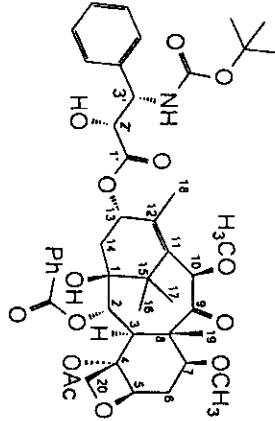


- TLC: 60 Å silica gel plates with fluorescent indicator
- Develop with Chloroform/Methanol/conc.NH₄OH 94/6/1
- Visualize via UV fluorescence quenching
- Also visualize by exposure to iodine vapor



LC Laboratories®

Cat. No. C-2581
Cabazitaxel
Lot CAB-104
>99%



2.13 2.13 1.25
1.1 4
1.26 1.15 1.18 0.4 1.16
1.15 1.21 3.11 1.15 2.31
2.96 1.22 1.31 2.84 8.98
2.86 3.05 7.4 6

Acquisition Date: Jul 23 2014
Spectrometer Freq.: 499.81 MHz
Solvent: cdcl3
Temperature: 298.15 K
Sweep Width: 16.03 ppm
Number of Scans: 16

CAB-22221-25g-CDCl3-20140723

- 8.094
- 8.080
- 7.614
- 7.599
- 7.584
- 7.497
- 7.481
- 7.466
- 7.414
- 7.396
- 7.386
- 7.346
- 7.336
- 7.330
- 7.308
- 7.258
- 6.222
- 6.205
- 6.187
- 5.633
- 5.619
- 5.434
- 5.415
- 5.271
- 5.256
- 4.978
- 4.974
- 4.959
- 4.955
- 4.792
- 4.618
- 4.299
- 4.283
- 4.177
- 4.176
- 4.160
- 4.158
- 3.869
- 3.856
- 3.848
- 3.835
- 3.813
- 3.799
- 3.449
- 3.304
- 2.722
- 2.709
- 2.702
- 2.693
- 2.689
- 2.680
- 2.674
- 2.661
- 2.355
- 2.291
- 2.272
- 1.873
- 1.818
- 1.763
- 1.712
- 1.647
- 1.603
- 1.356
- 1.211
- 1.201