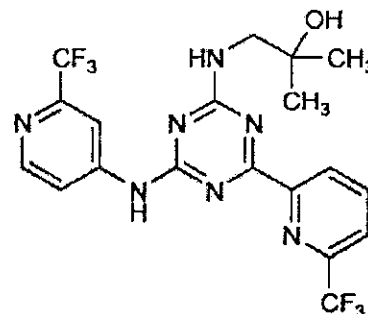


LC Laboratories®

CERTIFICATE OF ANALYSIS

Enasidenib, Free Base, >99%

LC LABS CAT. NO. E-2121
FORMULA C₁₉H₁₇F₆N₇O
M.W. 473.38
CAS NO. [1446502-11-9]
STORAGE Store at or below -20 °C***
SOLUBILITY Soluble in DMSO.



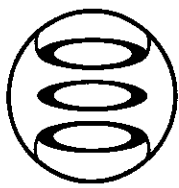
ANALYTICAL DATA

LOT NUMBER ENS-101
APPEARANCE Crystalline solid; granular or powder
COLOR White to off-white
HPLC PURITY 99% (see attached chromatogram)
TLC PURITY 99% (see attached chromatogram)
PROTON NMR (see attached spectrum)
ELEMENTAL ANALYSIS For C₁₉H₁₇F₆N₇O:

	<u>Calculated</u>	<u>Found</u>
C	48.21%	47.92%
H	3.62%	3.65%
F	24.08%	23.86%
N	20.71%	20.70%

***This product is stable at ambient temperature for several weeks during ordinary shipping and time spent in Customs or other delay. We recommend storage at -20 °C for long-term storage.

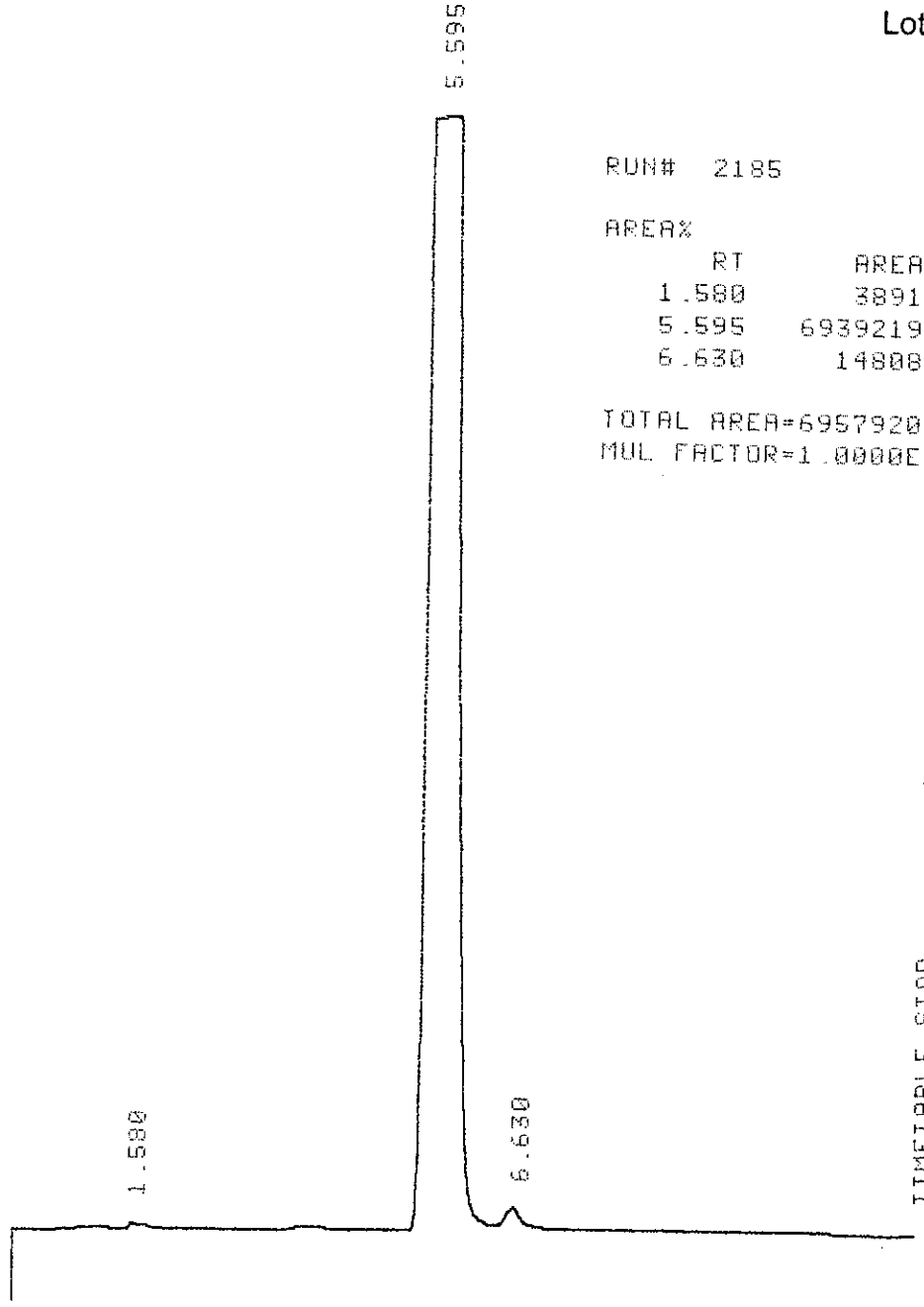
October 24, 2019
D:\COFA-BIZ\C-M-COFA\ENS101\FL WPD



LC Laboratories®

Cat. No. E-2121
Enasidenib, Free Base
 Lot ENS-101
 >99%

*CAT. No. E-2121 ENASIDENIB, FREE BASE LOT No. ENS-101
 * RUN # 2185 OCT 22, 2019 22:32:49
 START



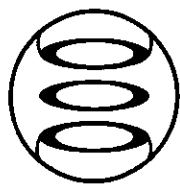
RUN# 2185 OCT 22, 2019 22:32:49

RT	AREA	TYPE	WIDTH	AREA%
1.580	3891	UP	.182	.05592
5.595	6939219	PB	.204	99.73126
6.630	14808	BP	.219	.21282

TOTAL AREA=6957920
 MUL FACTOR=1.0000E+00

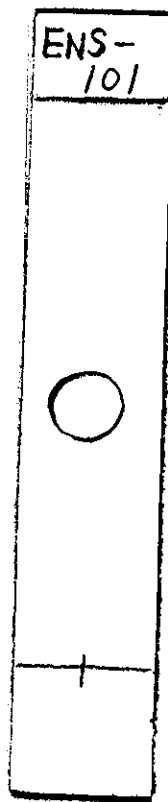
TIMETABLE STOP

HPLC: C₁₈ Column, 4.6 mm x 30 cm
 Acetonitrile/Methanol/Water/Trifluoroacetic Acid 33/33/34/0.1
 2 mL/min
 UV₂₅₄ Detection

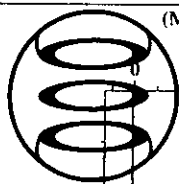


LC Laboratories[®]

Cat. No. E-2121
Enasidenib, Free Base
Lot ENS-101
>99%



- TLC: 60 Å silica gel plates with fluorescent indicator
- Develop with Chloroform/Methanol/conc. NH₄OH 90/10/1
- Visualize via UV fluorescence quenching
- Also visualize by exposure to iodine vapor



(Millions)

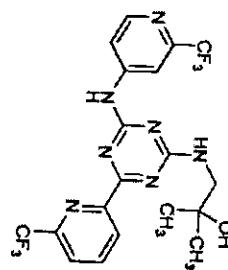
LC Laboratories®

40.0

50.0

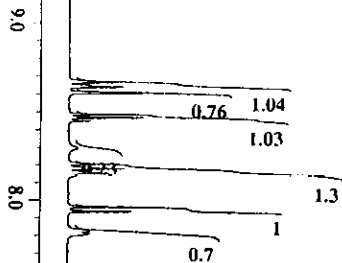
ENS-101-300MHz-PROTON-61df
 Acquisition Date: December 20, 2019
 Spectrometer Freq.: 300 MHz
 Solvent: CD₃OD

Cat. No. E-2121
Ensidenib, Free Base
 Lot ENS-101
 >99%



X : parts per Million : 1H

8.6663
 8.6397
 8.6104
 8.6040
 8.4886
 8.4694
 8.1782
 8.1517
 7.9640
 7.9383



4.8993

5.0

3.5450
 3.3088
 3.3033
 3.2978
 3.2923

4.0

3.0

2.0

2.0040

1.2797
 1.2733
 1.2522

1.0

0

0.76 1.04

1.03 1.3

0.7 1

0.54 1.48

5.97